

# MOOR CROFT

*2 Back St Hilda's Terrace, Whitby. YO21 3DN*



[www.moorcroftcottage.co.uk](http://www.moorcroftcottage.co.uk)



Situated just a couple of hundred yard from Whitby harbour and beach, close to the town park and only a 2 minute walk from shops and restaurants on Skinner Street, Moor Croft is a modern cottage built in 2007 in a sympathetic style to the original Georgian coach house that stood on the site.



It is ideal for access to the amenities of the town – pubs, restaurants, shops, etc the harbour and the beach by the West Cliff.

The lounge has windows to two elevations and is well appointed with comfortable furnishings, the focal point being a brick feature fireplace with electric stove.



The fully equipped dining kitchen has modern units with an electric oven and gas hob, integrated fridge and freezer, an automatic washing machine and a table that seats 4 comfortably. Off the kitchen is a ground floor cloakroom with a tumble dryer.



Upstairs, there are 2 bedrooms: One with a standard double bed and another with twin beds. The beds will be ready on arrival with duvets and towels are provided. The bathroom has a bath with shower over and glazed shower screen, toilet and washbasin.

Outside there is a paved seating area and a medium sized parking space.



The house is double glazed and heated by a combination gas central heating boiler and thermostatically controlled radiators, which means hot water is available at all times, and the temperature in each room can be adjusted easily.



The living room is comfortably furnished with a 3 seater settee and a chair, has a coal effect electric stove set in a deep inglenook style fireplace and a TV with freesat and a DVD player



The cottage should be kept clean and tidy and left in the condition in which it is found. Should any of the equipment prove defective, it should be reported so that repairs can be made quickly.

Any damage and breakages should be reported and made good.

### Cottage checklist

- Handy position in town
- Welcome pack
- Private parking
- Double & twin bedrooms
- Quality bed linen
- Bath sheets & towels
- Bath with shower over
- Central heating
- Double glazing
- Downstairs Cloakroom
- Freesat & DVD player
- Unlimited WiFi
- Cot and high chair
- Barbecue
- Washing machine
- Tumble Dryer
- Electric oven and gas hob
- Microwave
- Fridge and freezer
- Iron and ironing board

### **SORRY, NO SMOKING & NO PETS.**

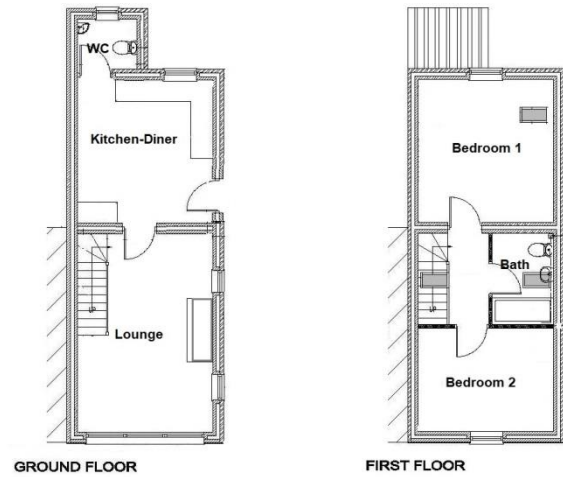
Parking permits available for an additional vehicle on request.

Check our website for recommendation as to where to eat and things to do locally.



## How to book

Bookings can be made via the link to the [www.SykesCottages.co.uk](http://www.SykesCottages.co.uk) website from our own website. Email us on: [email@moorcroftwhitby.co.uk](mailto:email@moorcroftwhitby.co.uk). Call: 01947 603047. Or message via our own website: [www.moorcroftwhitby.co.uk](http://www.moorcroftwhitby.co.uk) where you will find many more pictures and other useful information. The site has links to availability and rates.



*Kate Smith*

Home: 01947 603047

Mobile: 07387 917635

2 Back St Hilda's Terrace, Whitby. YO21 3DN

[www.moorcroftcottage.co.uk](http://www.moorcroftcottage.co.uk)

[info@moorcroftcottage.co.uk](mailto:info@moorcroftcottage.co.uk)